



# **HVAC Control Solutions**

TAKE CONTROL TO A NEW LEVEL

[www.qbitcontrol.com](http://www.qbitcontrol.com)

**Q**, stands for Quality  
the mark of an expert



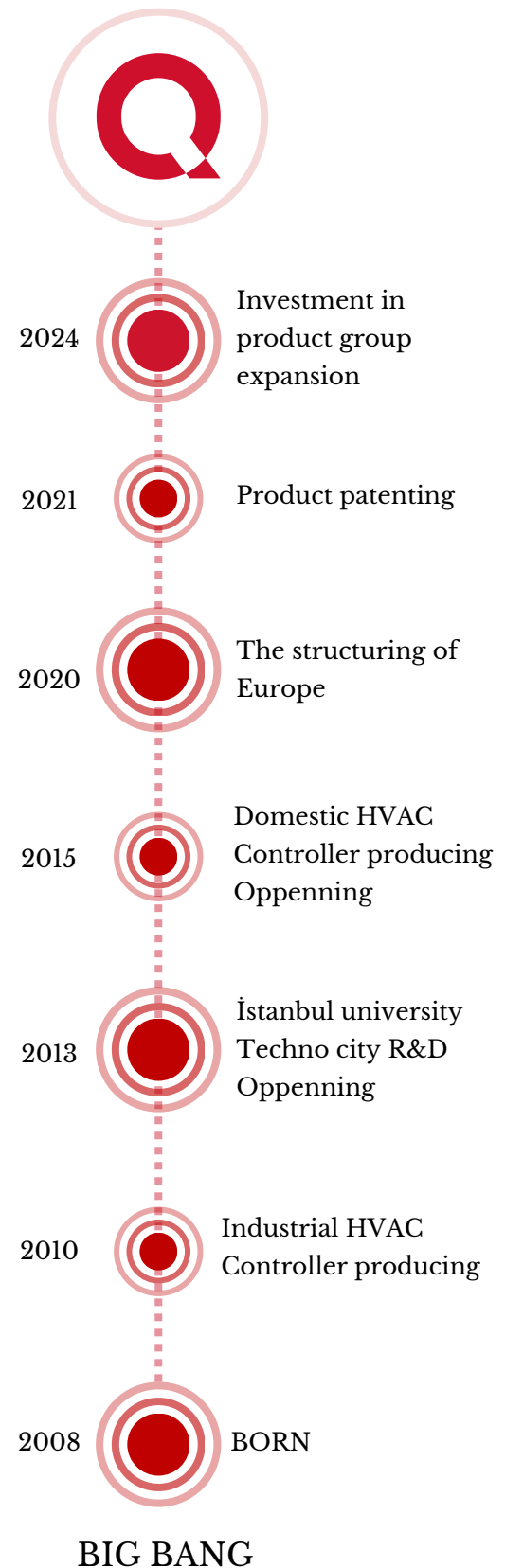
Let's Control **Q**uantumly

# About Us

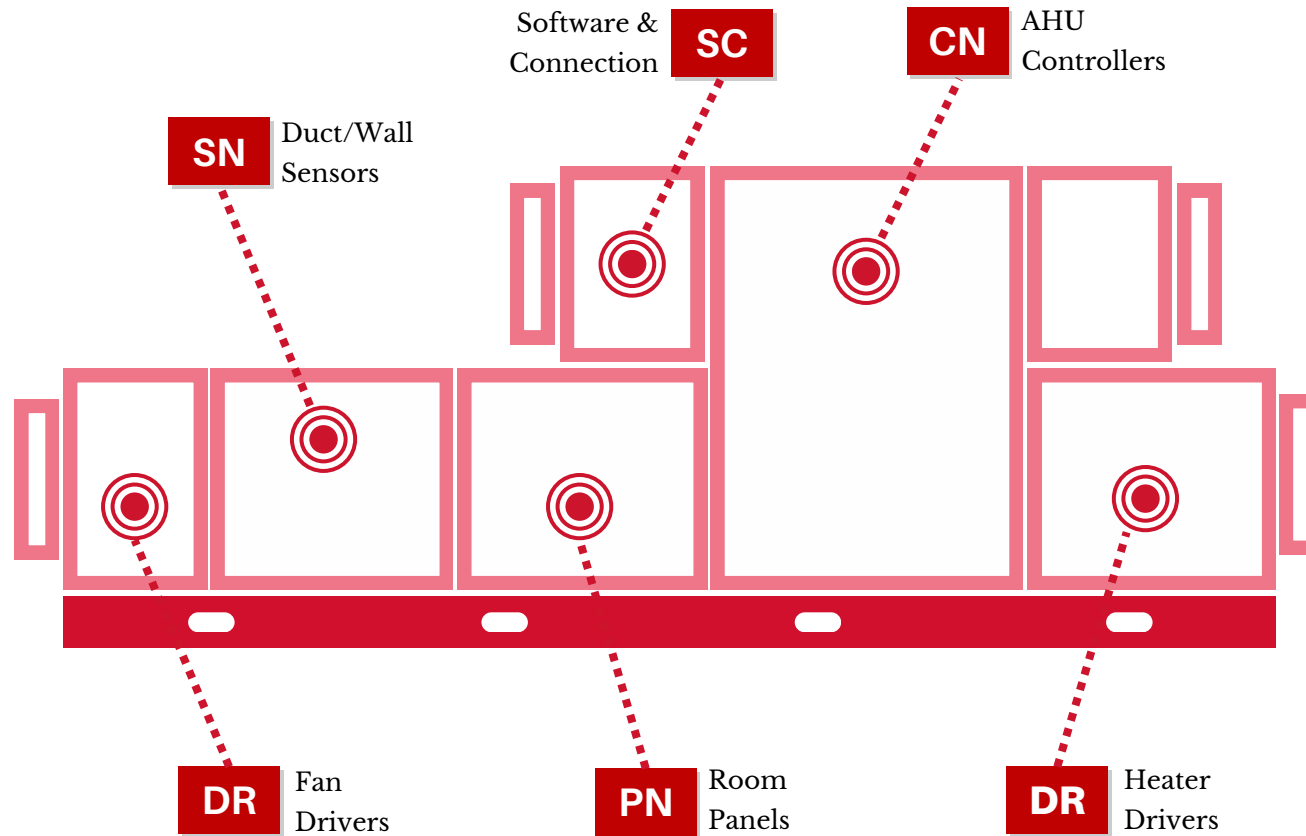
QBIT is a technology brand built on years of experience and a forward-thinking mindset. We focus on developing smart control systems and engineering solutions that make modern life more efficient and sustainable.

Since our beginning, we've aimed to offer reliable and practical solutions by listening to the needs of our customers and the industry. We continue to grow by embracing innovation, caring about energy efficiency, and staying connected to the people who use our technology.

At QBIT, our goal is simple — to make control smarter and technology more accessible, every day.



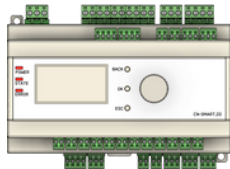
**BIG BANG**



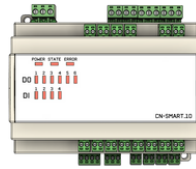
Every air handling unit requires balanced and precise control.  
**QBIT** devices provide reliable and flexible operation across all key points — from fans and heaters to sensors and controllers.

# Product Lines

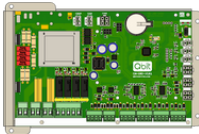
## CN Controllers



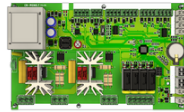
CN-SMART.20



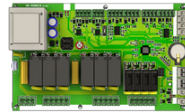
CN-SMART.10



CN-UNI



CN-MONO.T



CN-MONO.R

## PN Panels



PN-SMART.35



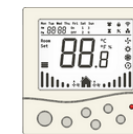
PN-SMART.25



PN-SMART.24



PN-SMART.20



PN-MONO.15



PN-MONO.10

## SC Softwares



QWEB



QHOME



QSERVICE

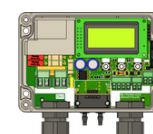


MD-CWF



MD-IOC

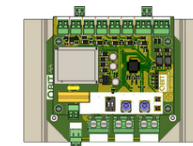
## DR Drivers



DR-FPC



DR-FSD



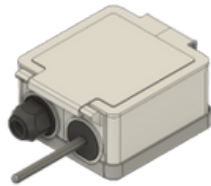
DR-EHT

# Product Lines

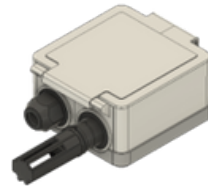
---

## SN Sensors

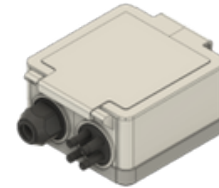
---



Wall Type  
Temperature



Wall Type  
Humidity



Pressure



Duct Type  
Temperature



Duct Type  
Humidity



Duct Type  
Air Quality

# Contents

## Controllers

CN

Page.7

HVAC Multi-function Controller Series

Smart Controller CN-SMART

Universal Controller CN-UNI

Mono Controller CN-MONO

## Softwares

SC

Page.11

HVAC Multi-function Software and Module Series

QWeb / QHome / QService

Wifi module

Wifi and Bluetooth module

## Panels

PN

Page.14

HVAC Multi-function Panel Series

Room Panel Smart PN-SMART

Room Panel Universal PN-UNI

Room Panel Mono PN-MONO

## Sensors

SN

Page.17

HVAC Multi-function Sensor Series

Temperature sensors

Humidity sensors

Carbondioxide sesnros

Air Quality sensors

Pressure sensors

## Drivers

DR

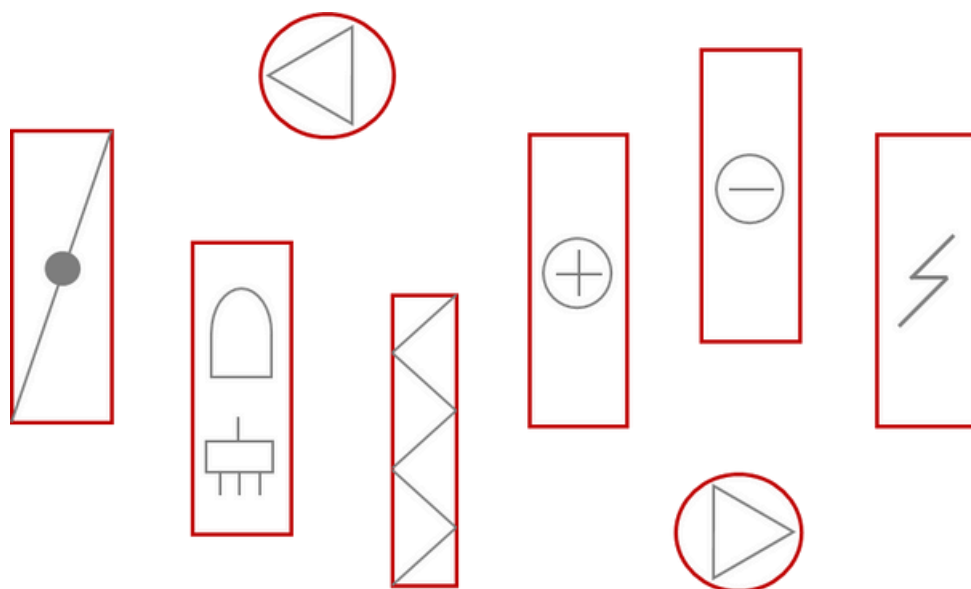
Page.21

HVAC Multi-function Driver Series

Fan pressure controller

Fan speed dimmer

Elektrical heater driver



# CN Series

# HVAC Multi-function Controller Series

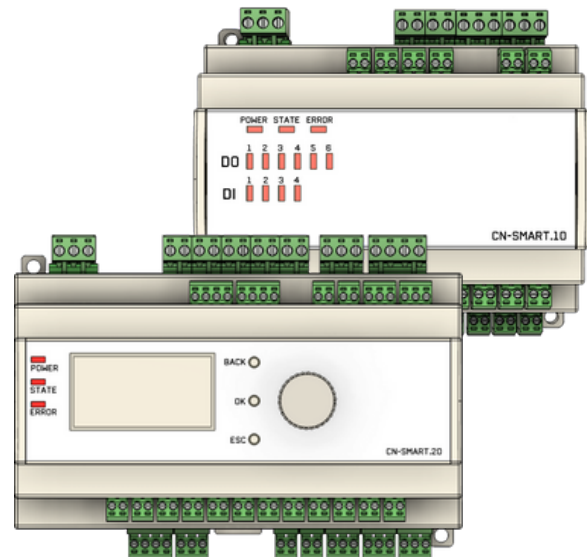
# TAKE CONTROL TO A NEW LEVEL



# CN Smart Series Controllers

The CN-SMART Series brings intelligence and simplicity together.

Designed for a wide range of HVAC control applications, it offers flexible I/O mapping, a multi-protocol communication structure, and an intuitive setup interface for seamless integration.



Whether used as a standalone unit or as part of a networked system, CN-SMART ensures precise control, energy efficiency, and effortless integration within modern building automation environments.

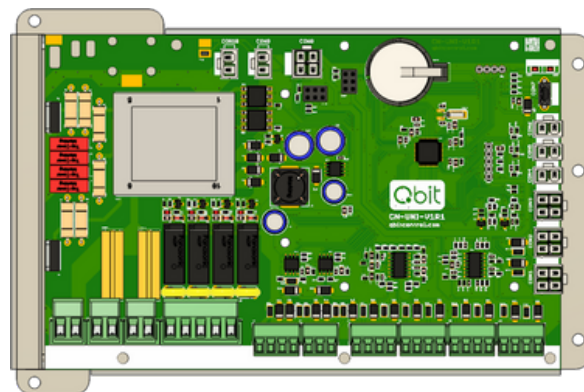
- Air handling unit control    ● Dehumidification control    ● Chiller control
- Rooftop control                ● Heatpump control                ● Cooling tower control

	CN-SMART.20	CN-SMART.10
<b>Power Supply</b>	24V AC/DC	24V AC/DC
<b>Digital Inputs</b>	6	4
<b>Universal Inputs</b>	12	8
<b>Analog Inputs</b>	6	2
<b>Analog Outputs</b>	8	4
<b>Digital Outputs</b>	10	6
<b>Communication</b>	2xRS485 Ethernet RJ45 USB Type-C	2xRS485 USB Type-C
<b>Other Features</b>	Real Time Clock 6MB Data Flash Memory	Real Time Clock Data Flash Connector
<b>User Interface</b>	Power, State, Error Indicators, Graphic LCD, Function Buttons and Rotary Button.	Power, State, Error Indicators and IO State Indicators

# CN Uni Series Controller

The CN-UNI Series brings intelligence and simplicity together.

Designed for a wide range of Heat Recovery Ventilator, Small Air Handling Unit and Fan Coil Units control applications, it offers flexible I/O mapping, a multi-protocol communication structure, and an intuitive setup interface for seamless integration.



Whether used as a standalone unit or as part of a networked system, CN-UNI ensures precise control, energy efficiency, and effortless integration within modern building automation environments.

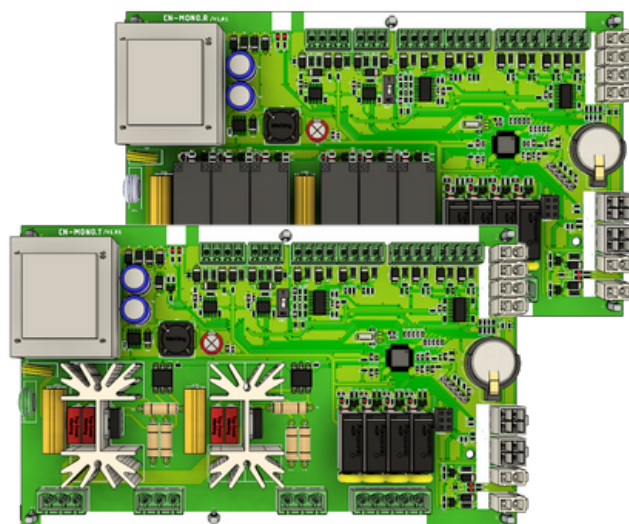
- Heat recovery ventilator control
- EC Fan control
- Electrical battery control
- Compact AHU control
- AC Fan Control
- Cooling battery control

	CN-UNI
Power Supply	220V AC
Digital Inputs	2
Universal Inputs	9
Analog Outputs	4
Digital Outputs	8 2x 12A Triac, 4x 5A Relay, 2x PWM
Communication	2xRS485
Other Features	Real Time Clock, Cable type of sensor connector, pressure module sensor connector, extra io module connector
User Interface	Power, State/Error Indicators and Web app connection

# CN Mono Series Controllers

The CN-MONO Series brings intelligence and simplicity together.

Designed for a wide range of Heat Recovery Ventilator control applications, it offers flexible I/O mapping, a multi-protocol communication structure, and an intuitive setup interface for seamless integration.



Whether used as a standalone unit or as part of a networked system, CN-MONO ensures precise control, energy efficiency, and effortless integration within modern building automation environments.

- Heat recovery ventiator control
- EC Fan control
- Electrical battery control
- 3 Speed Fan control
- AC Fan Control
- Cooling battery control

	CN-MONO.T	CN-MONO.R
Power Supply	220V AC	220V AC
Universal Inputs	8	8
Analog Inputs	2	2
Analog Outputs	2	2
Digital Outputs	8 4x5A Relay, 2x12A Triac, 2xPWM	12 4x5A Relay, 6x10A Relay, 2xPWM
Communication	2xRS485, TTL UART	2xRS485, TTL UART
Other Features	Real Time Clock, Cable type of sensor connector	Real Time Clock, Cable type of sensor connector
User Interface	Power, State, Error Indicators and Web app connection	Power, State/Error Indicators and Web app connection



# SOFTWARE & CONNECTION

## SC Series

HVAC Multi-function Software Series

TAKE CONTROL TO A NEW LEVEL

# SC Series Software

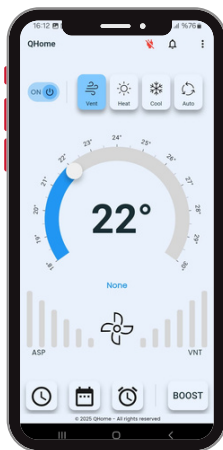
## QWEB

### Web-Based Parametric Programming Platform

QWEB is a web-based platform that enables parametric programming and firmware management for QBIT controllers, sensors, and panels.

It provides centralized configuration, testing, and update management for all devices at the factory and production level.

Designed for engineers and production teams, QWEB offers a powerful, secure, and flexible environment.



## QHOME

### Smart Control and Monitoring App

QHOME allows users to connect to QBIT controllers, panels, and sensors via Wi-Fi or Bluetooth to monitor and adjust operating settings.

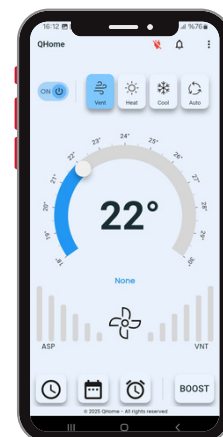
With its intuitive interface, it enables end-users to manage comfort and energy efficiency with ease.

## QSERVICE

### Commissioning and Maintenance App

QSERVICE provides access to QBIT devices via Wi-Fi or Bluetooth, enabling commissioning, service, and maintenance operations.

Developed for technical teams, it simplifies setup, diagnostics, and maintenance processes for faster and more reliable service.



# SC Series

## Connection

### MD-CWF

Wi-Fi Communication Module

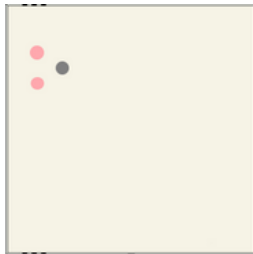
**Wifi Module**

MD-CWF is a Wi-Fi communication module designed to provide wireless connectivity for QBIT controllers, panels, and sensors.

With its RS485 and TTL UART interfaces, it offers flexible communication options across various systems.

Status indicator LEDs display power and connection states clearly.

Fully compatible with QWEB, QHOME, and QSERVICE platforms.



- Wi-Fi communication support
- RS485 port for network connection
- TTL UART interface for direct MCU communication
- Power and connection status LEDs
- Full integration with QWEB, QHOME, and QSERVICE
- Compact design and easy installation

### MD-CBT

Wi-Fi & Bluetooth Communication Module

**Service Module**

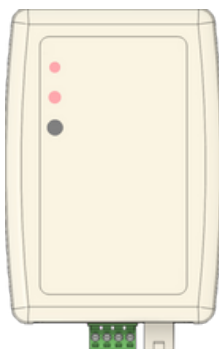
MD-CBT is an advanced communication module that combines Wi-Fi and Bluetooth connectivity for QBIT devices.

It features RS485, TTL UART, and USB Type-C interfaces for broad system compatibility.

The built-in battery ensures continuous operation during mobile and service tasks.

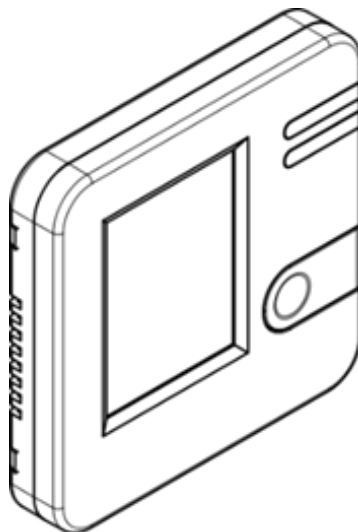
LED indicators allow easy monitoring of power and connection status.

Perfectly suited for use with QWEB, QHOME, and QSERVICE applications.



- Dual Wi-Fi and Bluetooth communication
- RS485 and TTL UART interfaces
- USB Type-C connection port
- Built-in battery for portable operation
- Power and connection status LEDs
- Full compatibility with QWEB, QHOME, and QSERVICE
- Ideal for technical service and field applications

**PN**



# PANELS

## PN Series

HVAC Multi-function Panel Series

TAKE CONTROL TO A NEW LEVEL

# PN Smart Series TFT Panels

## Touchscreen Smart Room Panels

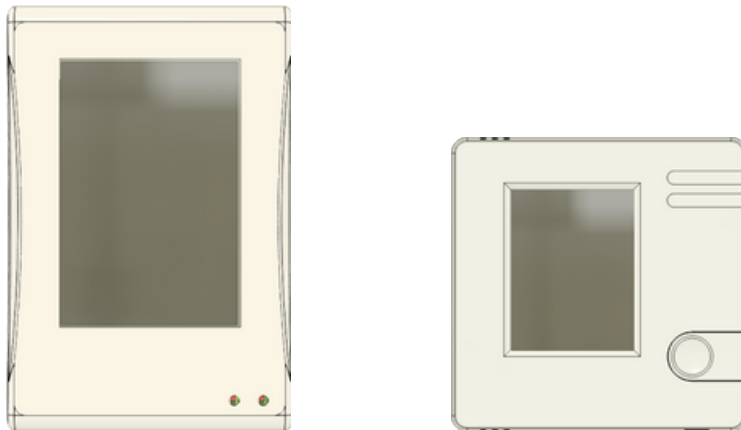
The SMART Series offers color TFT touchscreen room panels designed to enhance comfort and bring an elegant touch to building automation.

With its high-resolution display, intuitive interface, and wide range of sensor options, it provides advanced control capabilities.

Equipped with optional CO<sub>2</sub>, humidity, and VOC sensors, SMART panels enable real-time indoor air quality monitoring and management.

They operate seamlessly with QBIT controllers via RS485/Modbus, Wi-Fi, or Bluetooth communication.

- Color TFT touchscreen display
- Optional CO<sub>2</sub>, humidity, and VOC sensors
- RS485/Modbus, Wi-Fi, and Bluetooth communication
- Advanced and user-friendly interface
- Modern, capacitive touch design
- Compatible with QWEB, QHOME, and QSERVICE platforms



	PN-SMART.35	PN-SMART.24
Screen	3.5" TFT Panel, Touch	2.4" TFT Panel, Touch
Connection	RS485, Wifi, USB Type-C	RS485
Sensor	Temperature, Humidity, CO2, VOC	Temperature

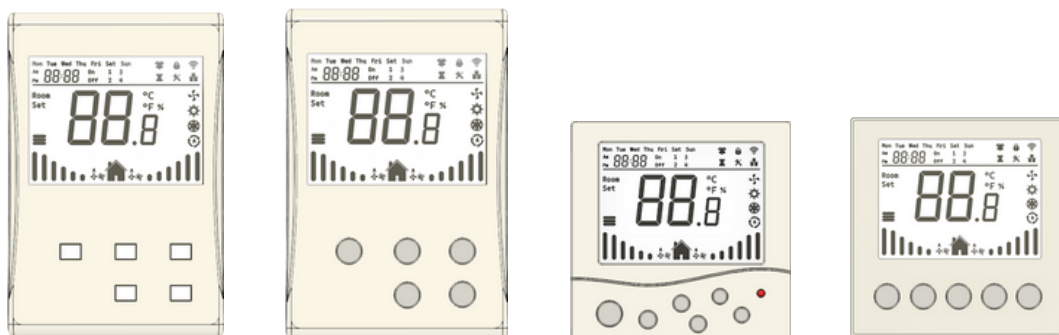


# PN Smart & Mono Series Segment Panels

## Segment LCD Functional Room Panels

The UNI Series consists of segment LCD room panels designed for reliability and ease of use. Available in touch or button-operated versions, the series adapts to various application needs. Selected models can be equipped with CO<sub>2</sub>, humidity, and VOC sensors, providing essential environmental monitoring. Through RS485/Modbus, Wi-Fi, or Bluetooth connectivity, UNI panels integrate seamlessly with QBIT controllers to ensure comfort and efficiency.

- Segment LCD display
- Touch or button-based control options
- Optional CO<sub>2</sub>, humidity, and VOC sensors
- RS485/Modbus, Wi-Fi, and Bluetooth connectivity
- Robust and user-friendly design
- Full compatibility with QWEB, QHOME, and QSERVICE



	PN-SMART.25	PN-SMART.20	PN-MONO.15	PN-MONO.10
Screen	Segment LCD, Push Button	Segment LCD, Capacitive Button	Segment LCD, Push Button	Segment LCD, Capacitive Button
Connection	RS485, Wifi	RS485, Wifi	RS485	RS485
Sensor	Temperature,Hu midity, CO2, VOC	Temperature, Humidity, CO2, VOC	Temperature	Temperature

# SENSORS

## SN Series

HVAC Multi-function Sensor Series

TAKE CONTROL TO A NEW LEVEL

# SN Series

## HVAC Sensors

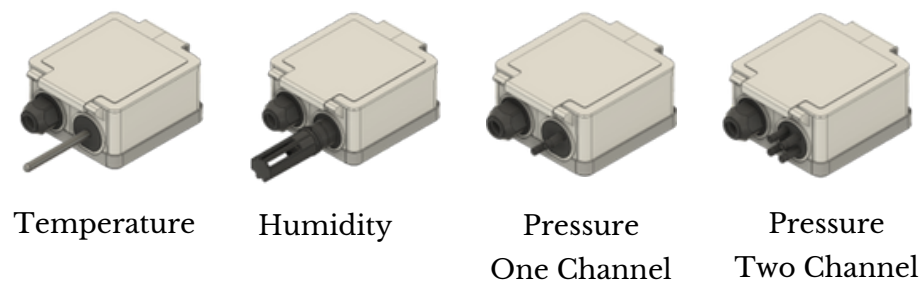
The SN Series offers reliable and versatile sensors designed for duct, wall, room, and outdoor applications. With configurable outputs, RS485 Modbus communication, and an optional LCD display, they provide flexibility for various HVAC control needs. Models for indoor and outdoor use ensure stable and accurate performance under all conditions.

- Duct/Wall/Outdoor type mounting
- Configurable outputs
- RS485 Modbus option
- LCD screen option

### Duct Mount Type Sensors

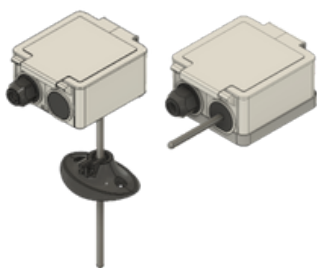


### Wall Mount Type Sensors



### Accessories



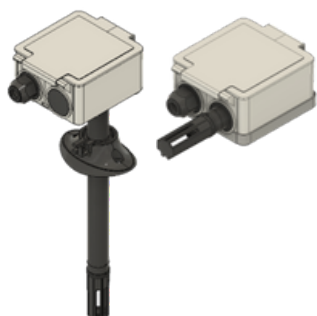


- Duct and Wall type models
- Active and Passive models
- Analog and Communicative options
- Probe length options
- Immersion and surface options
- Controller working mode options

## Temperature

Series	Mounting	Sensing	Probe	Interface	Options
SN: Sensor	MDT: Duct type MWL: Wall type MIM: Immersion MSR: Surface MOT: Outdoor	ST1: Passive 10K ST2: Passive 10K-II ST3: Passive PT100 ST4: Passive PT1000 STC: Custom Material	M05: Metal 50mm M15: Metal 150mm MPC: Custom length	IPO: Passive Out IAO: Analog Out IRS: RS485 Out	OL1: LCD Screen OC1: Control PID

**Example Order:** Sensor, duct mount, temperature sensor 10K and 150mm probe length.  
SN-MDT-ST1-M15



- Duct and Wall type models
- Analog and Communicative options
- LCD user interface options
- Controller working mode options

## Humidity

Series	Mounting	Sensing	Probe	Interface	Options
SN: Sensor	MDT: Duct type MWL: Wall type MIM: Immersion MSR: Surface MOT: Outdoor	SRH: Relative Humidity	P25: Plastic 250mm P05: Plastic 50mm	IAO: Analog Out IRS: RS485 Out	OL1: LCD Screen OC1: Control PID

**Example Order:** Sensor, duct mount, humidity sensor, analog out and display model.  
SN-MDT-SRH-P25-IAO-OL1

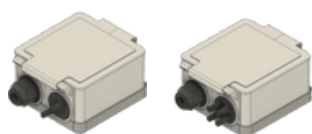


- Multi sensing models
- Duct and Wall type models
- LCD user interface options
- Controller working mode options
- Analog and Communicative options

## Air Quality

Series	Mounting	Sensing	Probe	Interface	Options
SN: Sensor	MDT: Duct type MWL: Wall type MOT: Outdoor	SRT: Hum. and Temp. SRC: Hum. and CO2 SCO: CO2 SCV: CO2 and VOC	P25: Plastic 250mm P05: Plastic 50mm	IAO: Analog Out IRS: RS485 Out	OL1: LCD Screen OC1: Control PID

**Example Order:** Sensor, Room mount, humidity/CO2 sensor, communicative and display model.  
SN-MWL-SRC-P05-IRS-OL1



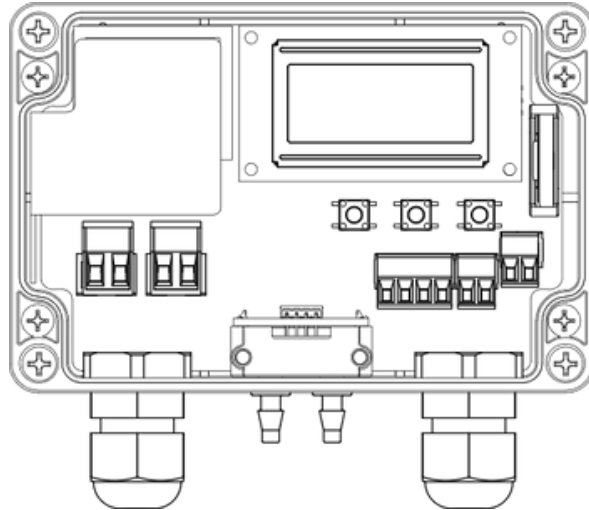
- Wall type models
- LCD user interface options
- One and double channel models
- Controller working mode options
- Analog and Communicative options

## Pressure

Series	Mounting	Sensing	Probe	Interface	Options
SN: Sensor	MWL: Wall type	SP1: $\pm 500$ Pa SP2: $\pm 2.500$ Pa SP3: $\pm 4.000$ Pa	PP1: One Channel PP2: Two Channel	IAO: Analog Out IRS: RS485 Out	OL1: LCD Screen OC1: Control PID

**Example Order:** Sensor, wall mount, pressure  $\pm 2.500$ Pa, communicative and controller model.  
SN-MWL-SP2-PP1-IRS-OC1

**DR**



# DRIVERS

## DR Series

HVAC Multi-function Driver Series

TAKE CONTROL TO A NEW LEVEL

# DR Series HVAC Drivers

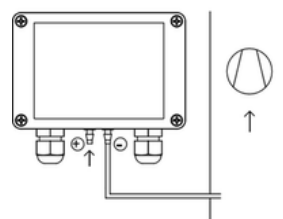
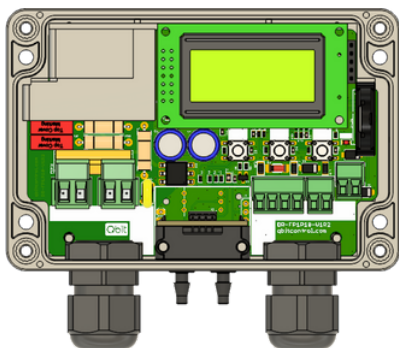
## DR-FPC

Hybrid Fan Pressure Controller

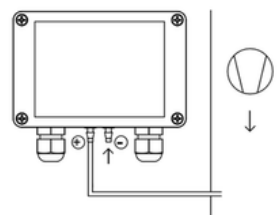
**Air Pressure**

The DR-FPC combines sensor and controller in one compact unit for precise pressure and airflow control. Suitable for roof, stair, and elevator pressurization systems, it supports both EC and AC fans. Powered by 220V AC, it offers RS485 Modbus communication and uses CMOSens® technology for accurate measurement.

- Pressure and Volume Control
- Roof Shot Fan Pressure Control
- Stair and Elevator Fan Pressure Control
- Damper and Filter Volume Control
- Sensor and Controller Modes
- EC and AC Fan Control
- Working with 220V AC supply
- Internal Time Clock
- RS485 Modbus
- CMOSens® Technology



Negative Pressure  
Control



Positive Pressure  
Control

Series	Model	Sensing	Probe	Interface	Options
DR: Driver	FPC: Fan Pressure Control	SP1: $\pm 500$ Pa SP2: $\pm 2,500$ Pa SP3: $\pm 4,000$ Pa	PP1: One Channel PP2: Two Channel	IAO: Analog Out IRS: RS485 Out	OL1: LCD Screen OC1: Control PID

## DR-FSD

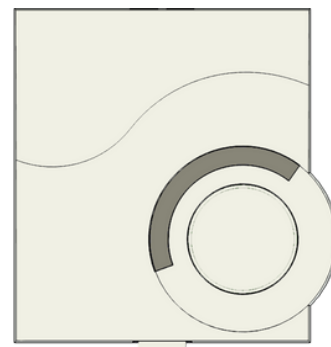
### Digital Fan Speed Dimmer

## Fan Speed

The DR-FSD provides precise and smooth fan speed control with a digital dimmer design. It features min/max speed limit adjustment and a clear LED status indicator for reliable operation. Ideal for simple and efficient fan control in ventilation systems.

- Digital Dimmer
- Min/Max Fan Speed Limit
- Min/Max Fan Speed Limit
- Working State Led Indicator

Series	Model	Output
DR: Driver	FSD: Fan Speed Dimmer	2A5: 2.5A 220V AC 5A0: 5.0A 220V AC 8A0: 8.0A 220V AC POT: 10K Potentiometer



## DR-EHT

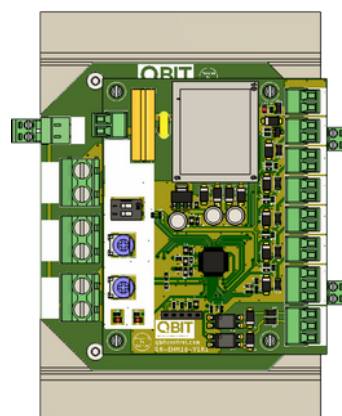
### Electrical Heater Controller

## Electrical Heater

The DR-EHT provides efficient and configurable electric heating control for 3kW–15kW systems. It supports 1-2-3 phase operation and can function in Controller or Driver mode. With digital sensor, thermostat, and BMS serial inputs, it ensures precise temperature management and seamless integration into building automation systems. Ideal for reliable and energy-efficient heating control in HVAC applications.

- 3kW – 15kW Electrical Heater
- Configurable system
- Controller or Driver mode
- 1-2-3 Phase control
- Digital sensor inputs
- External control inputs
- Room thermostat input
- BMS serial port input

Series	Model	Output	Interface	Options
DR: Driver	EHC: Electrical Heater	O15: 6kW O20: 9kW O30: 18kW	IAO: Analog Out IRS: RS485 Out	OC1: Control PID







QUANTUM CONTROL



WEB PAGE



DOCUMENTS



LINKEDIN



qbitcontrol.com



qbit control



+90 212 691 61 31



bd@qbitcontrol.com



Üniversite Mah. Sarıgül Sk. No:37/1  
İç Kapı No:37 Avcılar / İSTANBUL